



Veeam ONE monitoring

The industry standard for real-time monitoring



Veeam ONE is a 2-time Best of VMworld award winner and the 2012 Reader's Choice Award winner for Virtual Management & Optimization from *Virtualization Review*.

"Veeam ONE monitoring has become an essential tool in our virtual management toolbox. We use it to evaluate the performance of our virtual host systems. This information in turn helps us make decisions on how to best allocate our virtual host resources to new virtual machines.

"We looked for a tool for quite some time that was compatible with ESXi, and found what we were looking for in Veeam ONE. Veeam ONE is easy to install, simple to configure, and collects the data we need to effectively monitor our VMware hosts."

Tom Williamson
Network Analyst
City of Lynchburg



All the components of Veeam ONE have been verified by VMware as VMware Ready.

Veeam is an Elite VMware Technology Alliance Partner and a charter member of the VMware Ready Management program.

Veeam ONE™ is an easy-to-deploy, framework-independent solution for monitoring designed to meet the day-to-day needs of VMware administrators. Built from the ground up specifically for the virtual world, Veeam ONE provides support for troubleshooting and issue resolution, as well as trend reporting—equipping you to proactively manage the health and performance of your VMware infrastructure today and over the long term.

With Veeam ONE, you can view both real-time and historical resource usage for any virtual infrastructure object, as well as infrastructure events, all on a single screen. You gain a view of your virtual infrastructure as a unified entity, not just a collection of isolated guests.

Virtual infrastructure performance analysis

Veeam ONE shows comprehensive resource consumption and workload data for hosts, clusters and datastores, with visibility all the way down to individual VMs. Find out at a glance which components of your VMware infrastructure are the largest resource consumers and which ESX(i) hosts are the least loaded—right now and over time.

Advanced alerting and built-in intelligence

Veeam ONE offers over 125 pre-defined alarms with best-practices thresholds and an extensive knowledge base. The knowledge base explains each alarm and provides possible causes, suggested resolution and links to sources of additional information.

With Veeam ONE, you can easily set up e-mail notifications and SNMP traps for important events, such as when a given number of running VMs is exceeded, host hardware status changes or specific events are generated by a vCenter Server. The alarm modeler lets you quickly validate you are correctly setting alarm benchmarks and thresholds by testing candidate alarms against historical data.

Correlation of event and performance data

Veeam ONE helps you understand how virtual infrastructure activities affect VM performance and solve resource usage mysteries by overlaying real-time monitoring graphs with known virtual infrastructure events, such as vMotion, snapshot creation and deletion, and backup activities.

Storage monitoring

Veeam ONE provides full storage monitoring capabilities, including disk space and datastore monitoring. You can even view datastore load information aggregated from disk utilization statistics for all VMs and hosts using a specific datastore, allowing you to see the actual cumulative load on a particular datastore and be alerted when that load is above a specified threshold.

To learn more, visit: www.veeam.com

Veeam ONE

for VMware management

Veeam ONE provides VMware administrators with a single easy-to-use and powerful solution for real-time monitoring, change tracking, documentation and management reporting for multiple vCenter Servers and standalone hosts, including those running free vSphere Hypervisor.

Comprehensive virtualization management

Integrating the power of Veeam Monitor™, Veeam Reporter™ and Veeam Business View™ in a single solution, Veeam ONE provides complete visibility of the virtual infrastructure and affordably delivers the capabilities that matter most to VMware administrators.

Supported environments

Platforms:

- vSphere 5.0 and 4.x
- VMware Infrastructure 3.x (VI3)

Hosts:

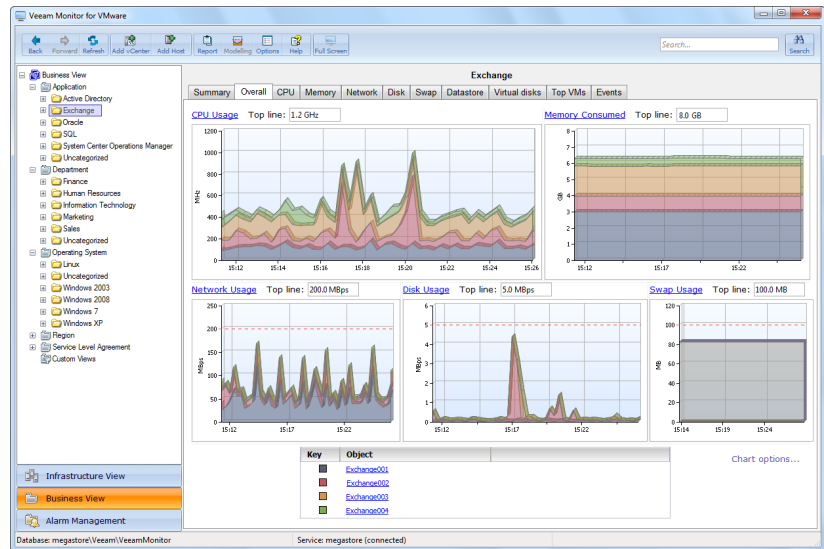
- ESX 4.x and 3.5
- ESXi 5.0, 4.x and 3.5
- vSphere Hypervisor (free ESXi)

Software:

- vCenter Server 5.0 and 4.x (optional)
- Virtual Center 2.5 (optional)

Monitoring dashboards

Veeam ONE includes a summary dashboard for each object in the infrastructure tree, giving you an at-a-glance view of the most useful information for any object and the ability to drill down to more detailed data as required.



Veeam ONE offers at-a-glance views of key performance metrics across multiple vCenter Servers and ESX(i) hosts.

Guest process management

In addition to monitoring the performance of your virtual environment and troubleshooting identified issues, you can drill down into individual virtual machines (VMs), view their running processes, and even terminate processes as needed—all from the monitoring interface. Or you can simply connect to the VM console to resolve issues.

Consolidated monitoring

Veeam ONE delivers a powerful and easy-to-use monitoring solution that enables multi-user access to performance data without affecting ESX(i) host or vCenter Server performance or changing your access policies. It agentlessly gathers all performance information into a Microsoft SQL Server database, allowing users to access infrastructure-wide performance data as needed. Veeam ONE monitoring is integrated with vCenter Server to provide cluster-aware monitoring of your VMs.

And with support for multiple vCenter Servers and standalone ESX(i) hosts, Monitor displays performance data for your entire virtual infrastructure on a single screen—no matter how large your VMware deployment is.

Business perspective

Veeam ONE leverages business categorization to enable performance monitoring, alerting and reporting for VM groups based on business unit, department, location, purpose, service-level agreement or any other criteria you define. Such business-centric monitoring enables more granular service-level management because it allows you to create flexible alerts based on known organizational characteristics and the potential business impact of an outage.



To learn more, visit: www.veeam.com

