

# Rittal TS8 Server Enclosures

RimatriX5 : Enclosures • Power • Cooling • Security • Monitoring+Remote Management



## Rittal Provides Smart IT Solutions

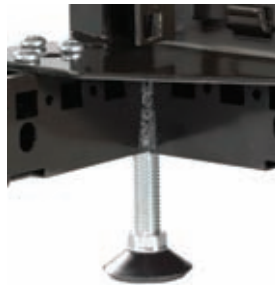
Server technology requires flexible enclosure systems for many different applications. Cabinets must be able to accommodate the ever changing requirements of the server field - variable widths and depths, installation flexibility and baying versatility. It is vital that the enclosure has cable management options, efficient use of interior space and reliable thermal management. Only one enclosure company can deliver this range of smart IT products – Rittal.



- 1 Grounding points on all surfaces
- 2 3,200 pound load limit on 19" rails across entire rail installation depth
- 3 Hole pattern in perforated door provides 64% open area for maximum airflow
- 4 Perforated roof with four cable entry points
- 5 Snap hinges for easy removal or replacement of doors
- 6 Split rear doors
- 7 19" rails front and rear
- 8 Open floor for maximized cable access



The **tool-less shelf** is one of many available accessories



**Threaded corner blocks** for quick installation of casters or leveling feet



Infinitely depth adjustable **19" rails** for flexible equipment installation



**Door fans** remove heat without taking up valuable "U" space

# Rittal RimatriX5

**RimatriX5** : Enclosures • Power • Cooling • Security • Monitoring+Remote Management

**RIMATRIX5**<sup>®</sup>  
DRIVING IT-PERFORMANCE

## RimatriX5 - scalable, flexible, complete.

Rittal pioneered the ideal IT cabinet with the TS8 server enclosure. But properly housing your IT components is only one of many complex issues facing the IT community. Information demands for business are constantly changing - power hungry applications, heat producing processors, 24/7 uptime demands and many other complex requirements all tax your mission critical IT infrastructure.

Rittal can make sense of these requirements with RimatriX5, an intelligently integrated, scalable system for the evolving IT demands of modern business.

RimatriX5 includes five key components:

**Enclosures** - designed specifically for the data center, the modular TS8 features a continuously welded 16-fold tubular frame for unsurpassed strength and flexibility. The wallmounted QuickBox is ideal for small networks, office spaces and school facilities. Factory automation means networking is finding it's way onto the shop floor - an ideal situation for the NEMA-rated three part EL. The proven TE7000 is perfect for value-conscious networking installations and quick, cost-effective cabling.

**Cooling** - avoid heat-related problems before they start with Rittal climate control components. State of the art liquid cooled enclosures for high density applications, fan systems, air conditioners, chillers and related accessories ensure your hot components stay cool and productive.

**Power** - consistent, redundant, dependable power is critical for components and downtime directly impacts the bottom line. Rittal Power Distribution Racks, Power Distribution Units and UPS systems reduce operating costs and ensure the availability of critical IT systems. This scalable system makes it possible to add new modules without interrupting your data center operation.

**Security** - a safe guarded data center is critical to business success. Rittal has you covered with the proven CMC-TC system, our complete line of hardware and software security with one aim - protecting the data center.

**Monitoring+Remote Management** - RimatriX5 helps prevent down time by monitoring data center power, climate control and environmental systems. Knowing about problems before they occur means peace of mind.



Rittal Corporation • One Rittal Place • Springfield, OH 45504, USA  
Phone: 937.399.0500 • Fax: 937.390.5599 • Toll-free: 1.800.477.4000 • www.rittal-corp.com • Email: rittal@rittal-corp.com

Rittal Systems Ltd. • 7320 Pacific Circle • Mississauga, Ontario Canada L5T 1V1  
Phone: 905.795.0777 • Fax: 905.795.9548 • Toll-free: 800.399.0748 • www.rittal.ca • Email: marketing@rittal.ca



*Switch to perfection* **RITTAL**